



U.S. Highway 75 Frontage

Howe, Texas

14 Acres on US Highway 75

- Retail corridor with US 75 frontage
- Water/sewer to site along public streets
- Future interchange is proposed at US 75 & Hall Cemetary Rd./Bledsoe St.

ADDITIONAL INFO

Acreage: 14.043Acres
Price: \$3,000,000
Zoning: C2
Future Use: Commercial
Frontage: U.S. 75

MCM REAL ESTATE ADVISORS

901 Boland Street, Fort Worth TX 76107
Office : 817-550-3363

Matt McWilliams
matt@mcmra.com
www.MCMRA.com



U.S. Highway 75 Frontage

Howe, Texas



SOUTH

EAST



MCM REAL ESTATE ADVISORS

901 Boland Street, Fort Worth TX 76107
Office: 817-550-3363

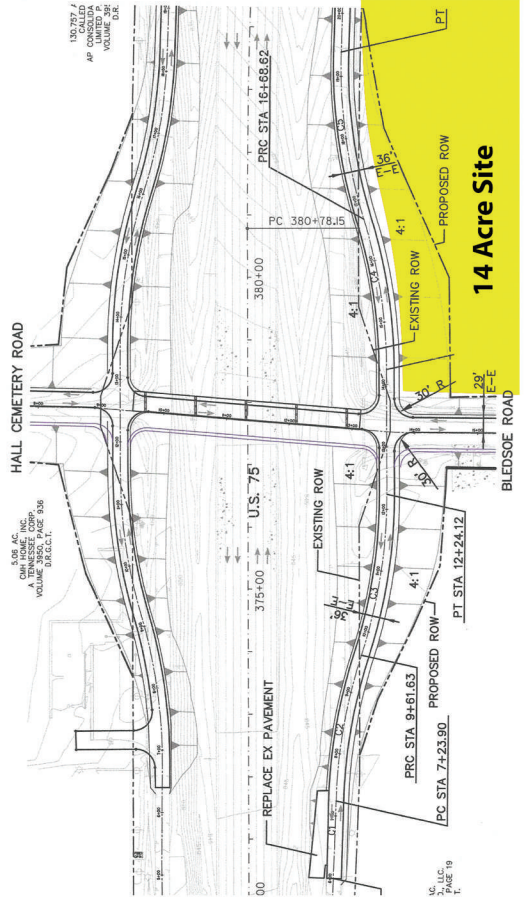
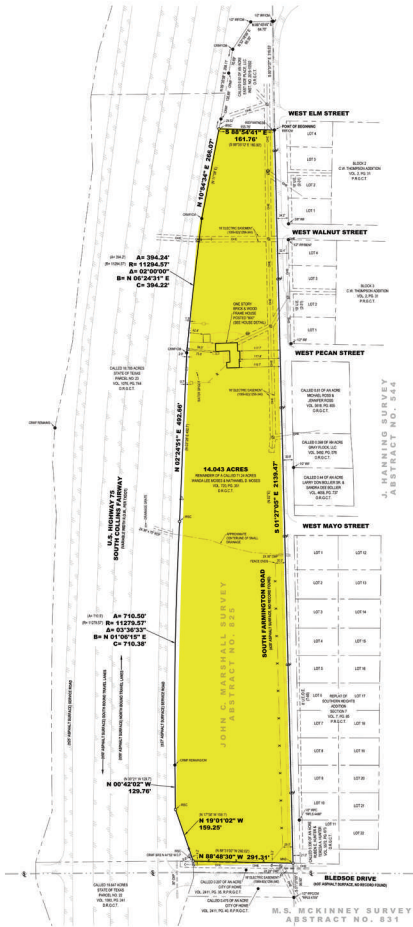
Matt McWilliams
matt@mcmra.com
www.MCMRA.com

U.S. Highway 75 Frontage

Howe, Texas

SURVEY

Future Interchange



MCM REAL ESTATE ADVISORS

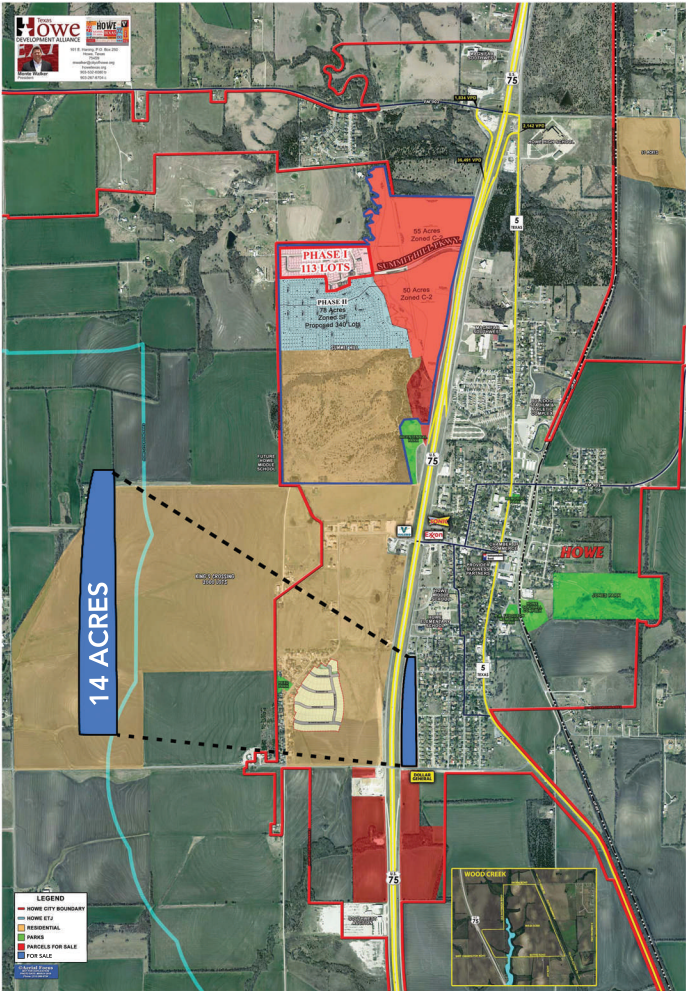
901 Boland Street, Fort Worth TX 76107
Office: 817-550-3363

Matt McWilliams
matt@mcmra.com
www.MCMRA.com

U.S. Highway 75 Frontage

Howe, Texas

FUTURE LAND USE



MCM REAL ESTATE ADVISORS

901 Boland Street, Fort Worth TX 76107
Office: 817-550-3363

Matt McWilliams
matt@mcmra.com
www.MCMRA.com